

***** **NEW** *****

J1939 COMBO CONTROL SYSTEM

WIRELESS & HARD WIRED

This system is the only product needed for your Truck/Engine interfacing

Features

- Up to 8 Wireless Inputs
- Up to 8 Hard Wired Inputs
- Smart Engine Start/Stop - One Input Control
- Set RPM/E-Pump Control - One Input Control
- 3 Programmable Set Speeds
- Variable RPM Increase/Decrease
- Foot/Hand Throttle Control
- PTO Control (Overspeed Protection)
- Auto Neutral
- Throttle Inhibit
- 3 Spare Relays
- On Board Programing
- LED Light Diagnosing
- Plug and Play Harnesses Available

Optional Transmitters



Receiver



P/N - EDRJ100W

****Call for Pricing****



Uses Deutsch Size 16 Pins



1525 Windham Rd 12
RR# 4 Simcoe, ON
N3Y 4K3

Ph: (519) 758-7901
Fax: (519) 428-2119
1-866-519-9817

E-mail: parts@rpmcontrol.com
or visit us on the web at:
www.rpmcontrol.com

Your electrical control specialists

EDRJ WIRELESS TRANSMITTER OPTIONS

Button Output

- Button #1
- Button #2
- Button #3
- Button #4
- Button #5
- Button #6
- Button #7
- Button #8

BUTTON OUTPUTS ARE FULLY PROGRAMMABLE,
 ANY ONE BUTTON CAN BE PROGRAMMED TO
 CONTROL ANY OF THE OPTIONS. EXAMPLE BUTTON
 #1 TO CONTROL OPTION #6, BUTTON #2 TO
 CONTROL OPTION #1
 BUTTON OUTPUTS CAN BE PROGRAMMED FOR A
 LATCHED OR MOMENTARY OUTPUT

Wireless Controlled Options

- 1) PTO ON / RPM P3
- 2) SET RPM #2 P2
- 3) SET RPM #3 P1*
- 4) INCREASE RPM
- 5) DECREASE RPM / SPARE RELAY #3
- 6) SMART START/STOP ENGINE
- 7) SPARE RELAY #2
- 8) SPARE RELAY #1

*Note: Set RPM #3 P1 is not used when Remote Throttle is enabled

OPTIONAL TRANSMITTER CONTROLS



8 BUTTON FOB



1 - 5 BUTTON FOB



12 PIN WIRELESS SWITCH INPUT CONTROLLER

UTILITY APPLICATION



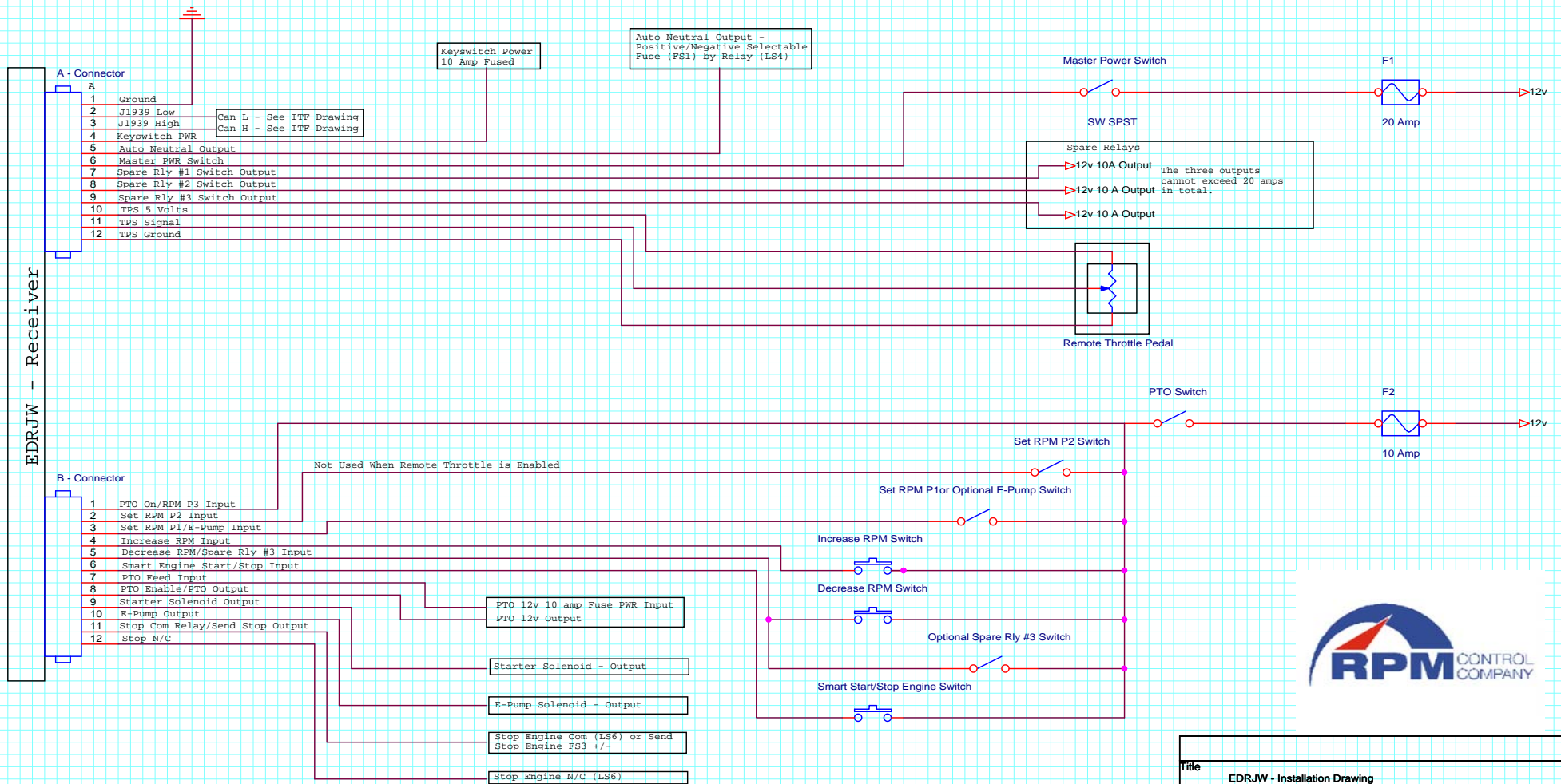
2 BUTTON



4 BUTTON MEMBRANE SWITCH CONTROLLER

Custom Labeling for the Fobs Available

BASIC INTERFACE DRAWING FOR THE EDRJW WIRELESS CONTROL SYSTEM



Title		EDR.JW - Installation Drawing	
Size	Document Number	Rev	
B	EMA-12345678	A	
Date:	Monday, April 16, 2018	Sheet	1 of 1